

# EWS TELEMETRY DATA & RESEARCH

---



**EWS Australia**  
Connect Everywhere



# WHO IS EWS?

**Connect everywhere, data to desktop anytime.**

- Industry leading and innovative **IoT telemetry** manufacturer
- Providing **low cost** Satellite and Cellular IoT products and services, delivering the power to **measure and transmit** environmental, hydrometric and geotechnical data
- **Simple** to install, train and use
- **Intuitive secure data portal** to view and manage data from field to your desktop
- **Push data** to any existing database
- **On-time**, high **quality** and **frequent** data
- **Save** significant hours in the field and **reducing exposure** to site risks
- **Deal direct** = fast response and better support



# EWS

## PRODUCTS & SERVICES

---



Advanced range of sophisticated multi comm IOT transmitters



Australian designed, manufactured and local supported products



Equipment manufacturing process is certified by ISO 9001:2015 QMS systems\*



Products Certified by Iridium for use on their Satellite constellation



EWS products have an exclusive licence to activate plans on the Iridium constellation



EWS data portal has been certified by multiple large mining companies Cyber security groups for use across operations



# PARTNERING WITH INDUSTRY

## Where it started

- EWS identified need for new technology to access data from remote areas
- Manual dip and radio or cellular comms heavily relied upon, but inconsistent and unreliable
- Safety issues and exposure to risks in field
- Running low packet, low power, satellite telemetry across remote mining locations for 6 years
- Enabled data to desktop from anywhere



# PARTNERING WITH INDUSTRY

---

## Benefits delivered by EWS telemetry

- SAFETY – Reducing risk of in field incidents (SME, vehicle, weather, wildlife)
- COST SAVINGS – Time in field, travel
- DATA – Power of data to desktop = informed decision making (daily)
- OPPORTUNITY COST – prewarning of events that may impact production, proactive vs reactive
- ANALYTICS – Trending/analysis (regulatory, strategic, evaluation)
- AUTOMATION – Reduce instance of human error
- RELIABILITY – No single point of failure or downtime from extreme weather

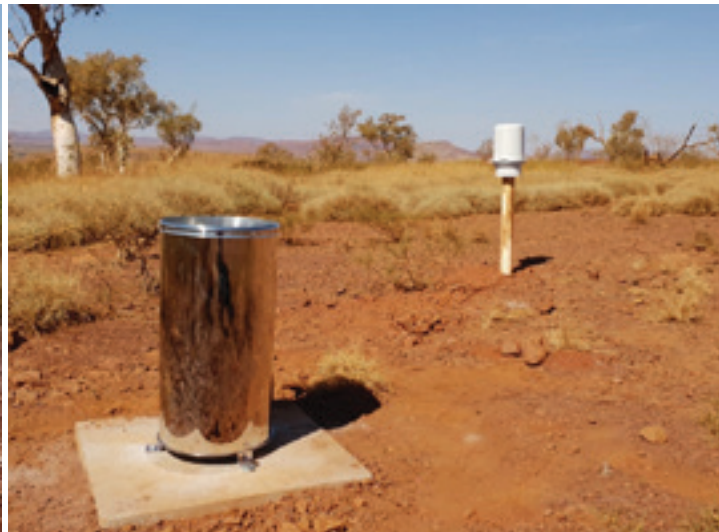


# PARTNERING WITH INDUSTRY

---

## Where we are now

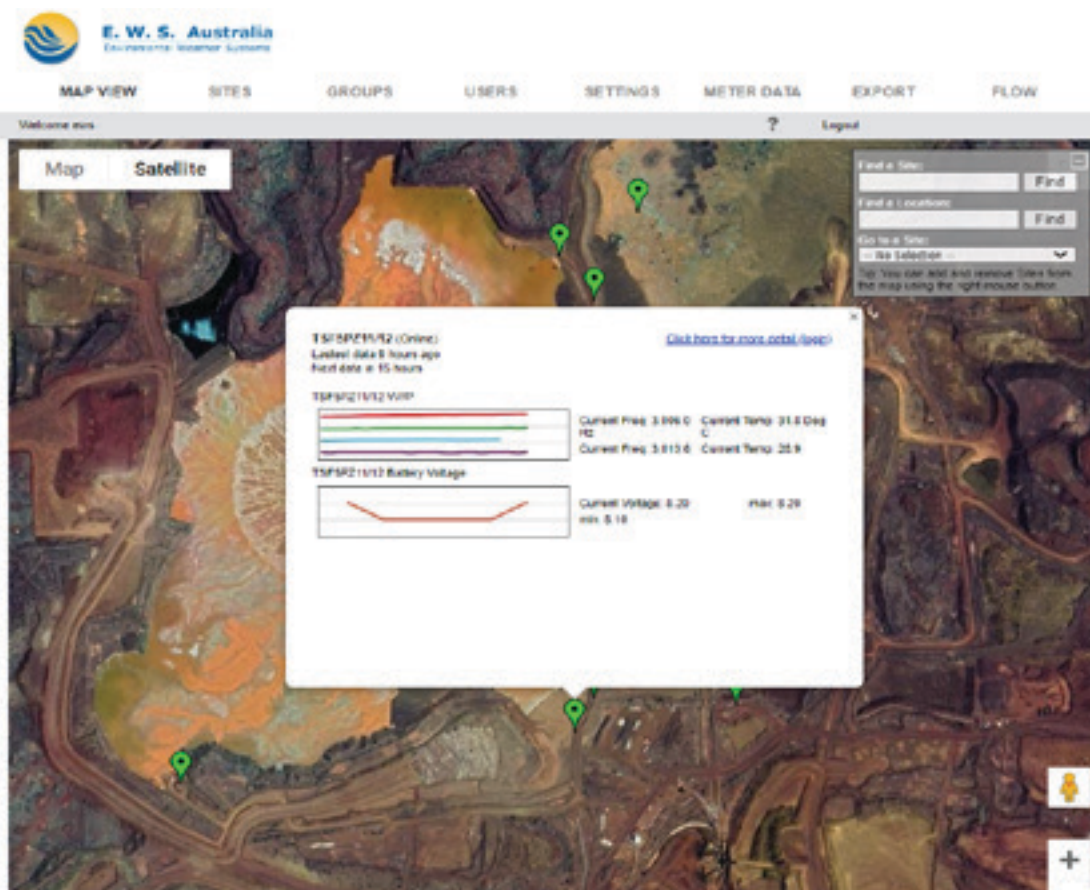
- EWS designed Well Cap
- Well Cap transmits low packet, low cost data over Satellite
- Started monitoring ground water levels





# PARTNERING WITH INDUSTRY

Moved into vibrating wires...



# PARTNERING WITH INDUSTRY

Flood warning and research...

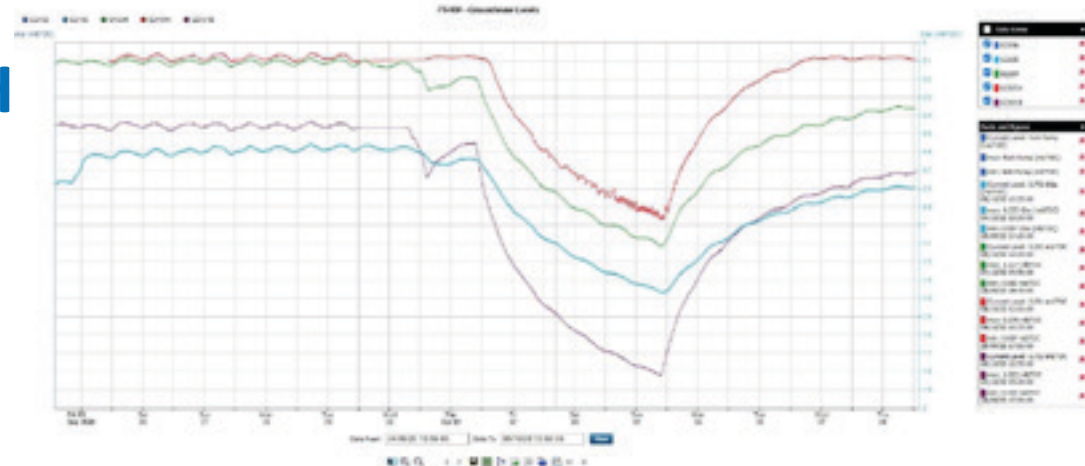




# PARTNERING WITH INDUSTRY

## Providing continuity across operations

- Expansion to aluminium and coal operations



# RTNERING WITH USTRY

Continuous improvement approach (R&D)



# THE IRIDIUM<sup>®</sup> NETWORK: RELIABILITY ABOVE ALL<sup>SM</sup>

## 66 ACTIVE SATELLITES

- 6 orbital planes with 11 satellites each
- Plus 9 in-orbit spares
- Plus 6 ground spares

## LOW-EARTH ORBIT (LEO)

- Enables reliable communications anywhere in the world

## L-BAND SYSTEM

- Allows for transmissions even in adverse weather conditions

## SATELLITE CROSSLINKS

- Creates low-latency, resilient, high-quality connections



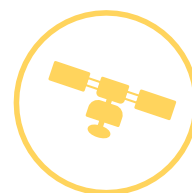


# THE IRIDIUM® NETWORK: BENEFITS OF SATELLITE

---



Significantly lower costs  
using short burst data  
different to conventional  
airtime

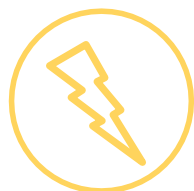


No single point of failure,  
unlike cellular or radio  
networks

Changing cell networks  
limit lifespan of telemetry;  
3G, 4G, 5G, what's next??



Moving dynamic mine sites  
larger pits, waste dumps,  
remote exploration areas



No downtime during  
extreme weather events

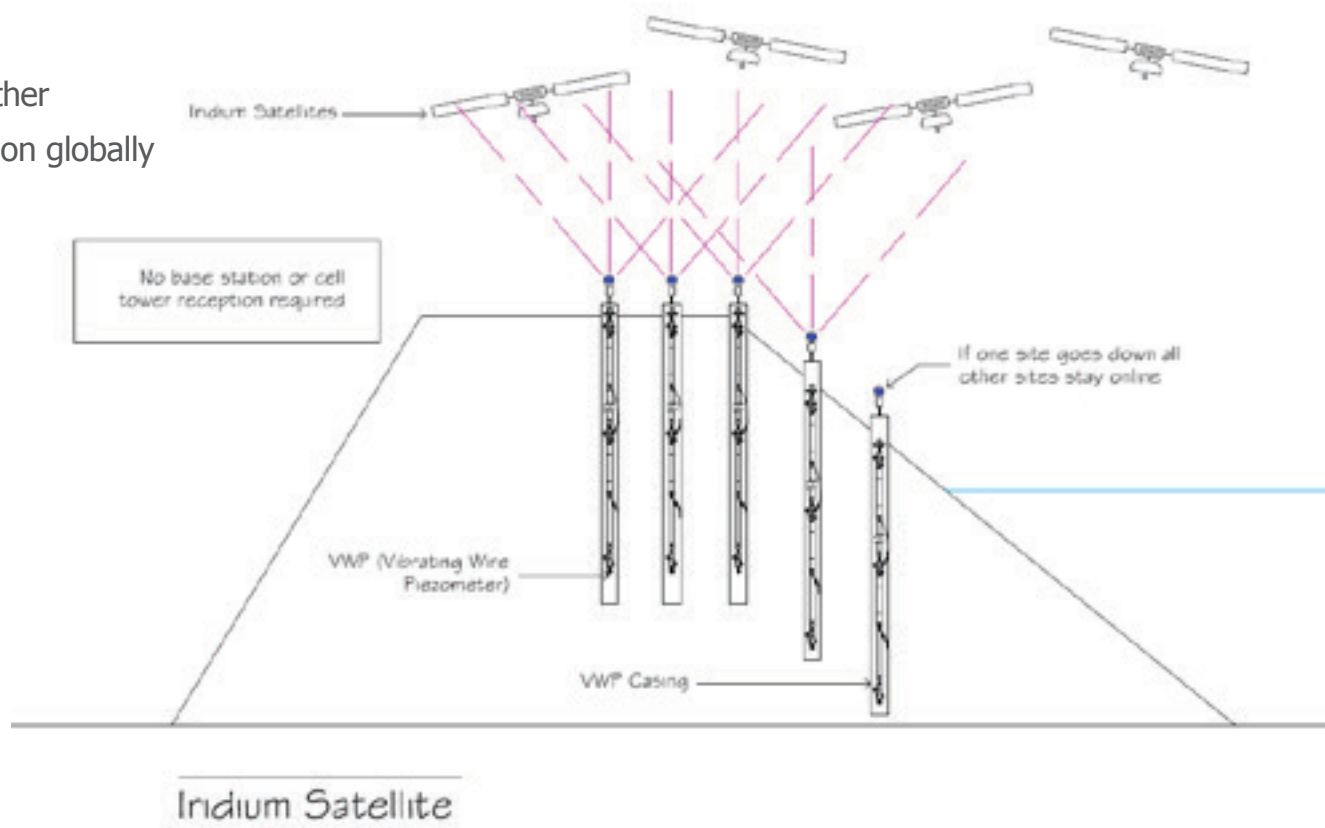


Low orbit Sat works  
everywhere and is licensed  
in most country's

# THE IRIDIUM® NETWORK: WHY SATELLITE?

## SATELLITE NETWORK

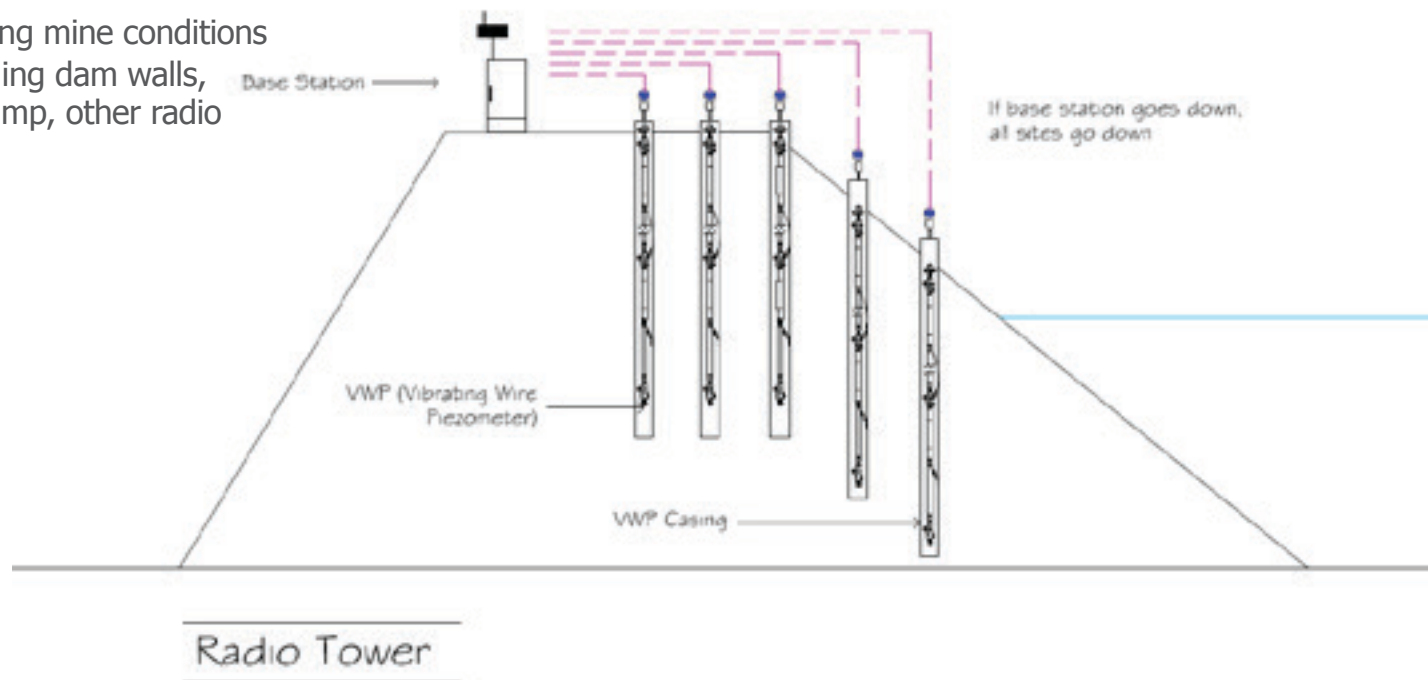
- ✓ No single point failure
- ✓ Not susceptible to weather
- ✓ Reliable from any location globally



# THE IRIDIUM® NETWORK: WHY SATELLITE?

## LINE OF SITE RADIO NETWORK

- ✗ Single point failure
- ✗ Susceptible to weather
- ✗ Affected by changing mine conditions  
e.g., increasing tailing dam walls,  
benches, waste dump, other radio  
frequencies

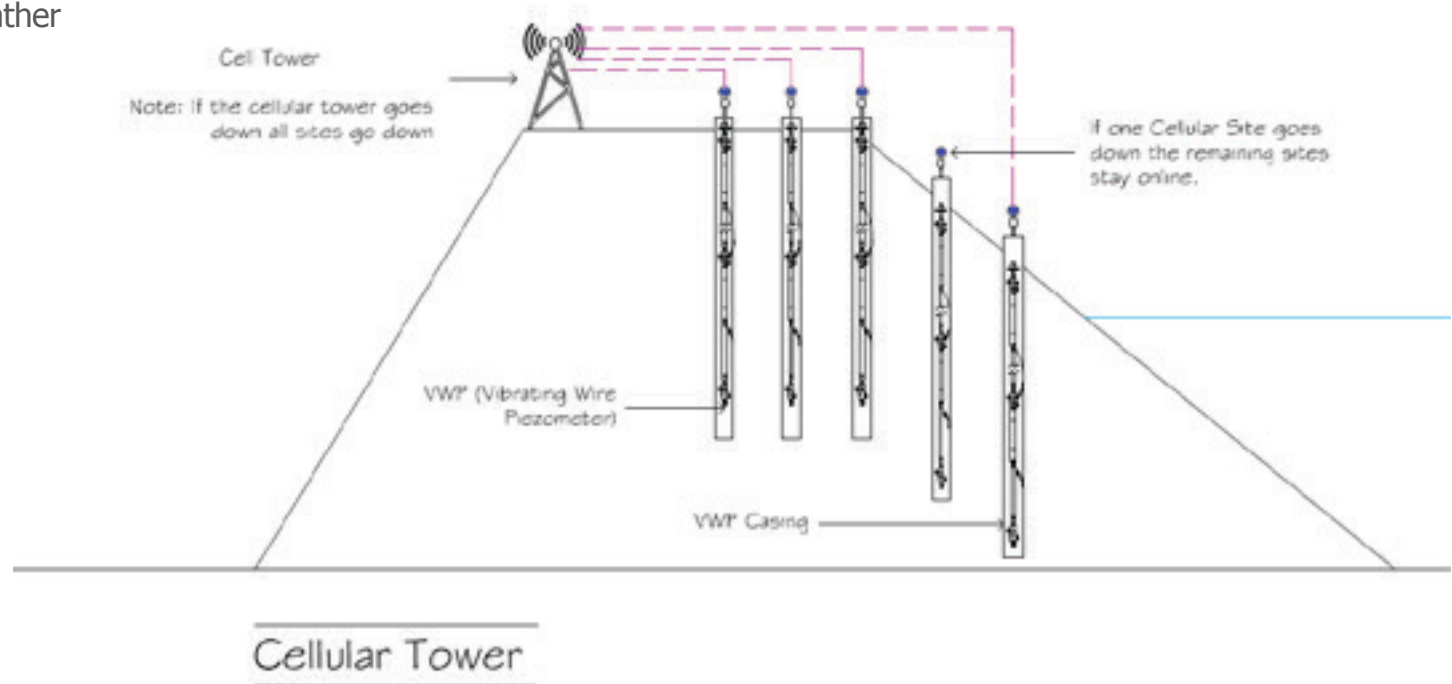




# THE IRIDIUM® NETWORK: WHY SATELLITE?

## CELLULAR NETWORK

- ✗ Single point failure
- ✗ Ever changing tech, creates redundant systems
- ✗ Susceptible to weather



# GLOBAL DOESN'T NEED A COVERAGE MAP

---

Terrestrial (ground based) networks only cover approximately 15% of the Earth



# CELLULAR

## NEW CAT M1 TECHNOLOGY



Recent addition to IoT products that require ultra low power consumption

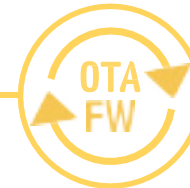


Medium data rates  
(up to 375kbps)

Low Cost



Ability for  
OTA FW updates



Global frequency bands



Low data cost

Small modem size  
(22.5 mm x 26.5 mm footprint)



Low power consumption  
(10 $\mu$ A in power saving mode)





# EWS KEY PRODUCTS

---



# SWITCH™

Connects with  
most enviro  
sensors

Iridium, CAT M1  
Cellular communications

IP67, IP68 plug and  
terminal options

NFC technology or  
Magnet to switch on

Bluetooth connect or USB

Internal back up lithium battery



## OTHER FEATURES



Bluetooth allows  
for connection to  
wireless sensors



Two Way  
communications



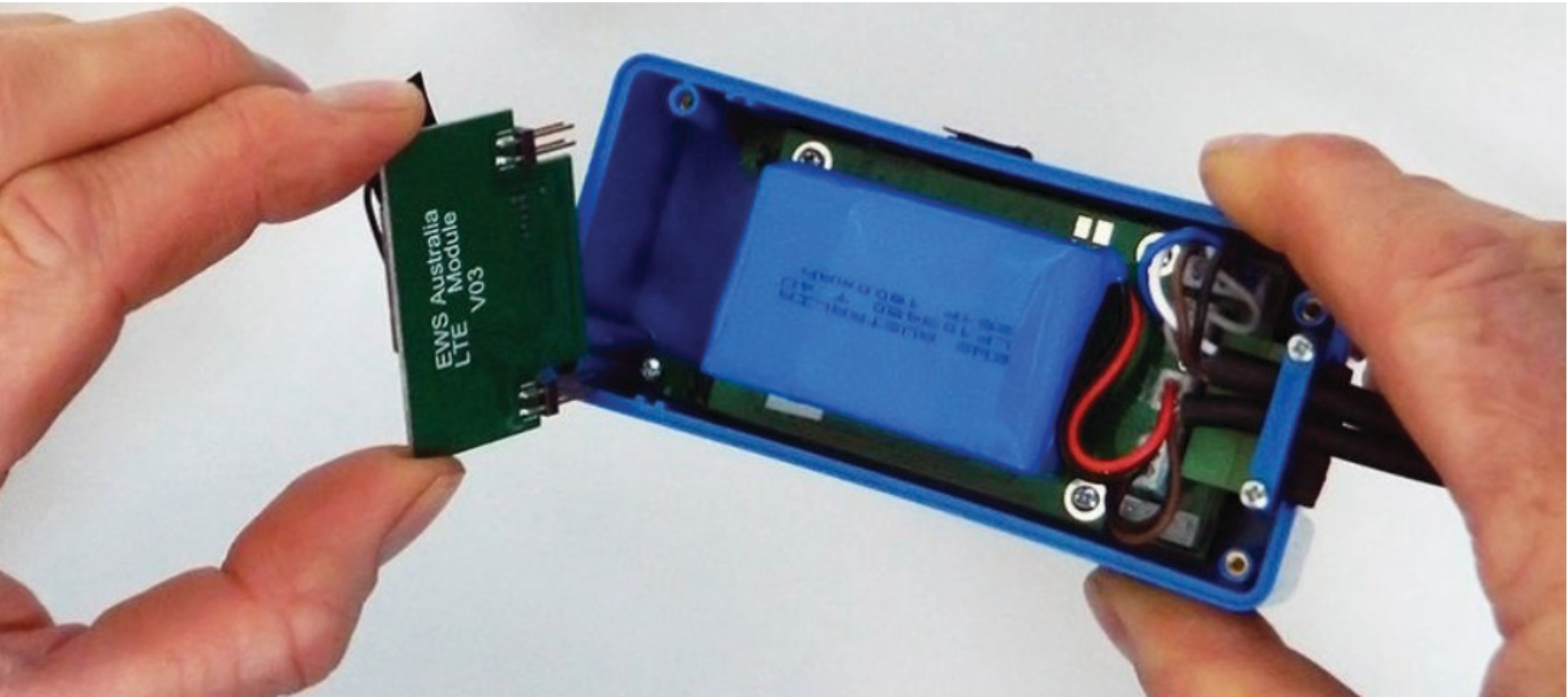
Made from 20%  
recycled products



App for Android and  
IOS for quick connect  
set up and test in field  
prior to deployment



# SWITCH™



# SWITCH-VWT

Iridium, CAT M1Cell

4 wire terminal direct connect

Ability to connect other sensors to the same unit (485, SDI, Pulse, 4/20) Rain gauges, flow meters, well caps weather stations, etc.

Easily expandable to 8wire

NFC technology or Magnet to switch on

Bluetooth connect or USB

Internal rechargeable battery and solar regulator



## OTHER ACCESSORIES / FEATURES



Connects to any vibrating wire sensor



Made from 20% recycled products



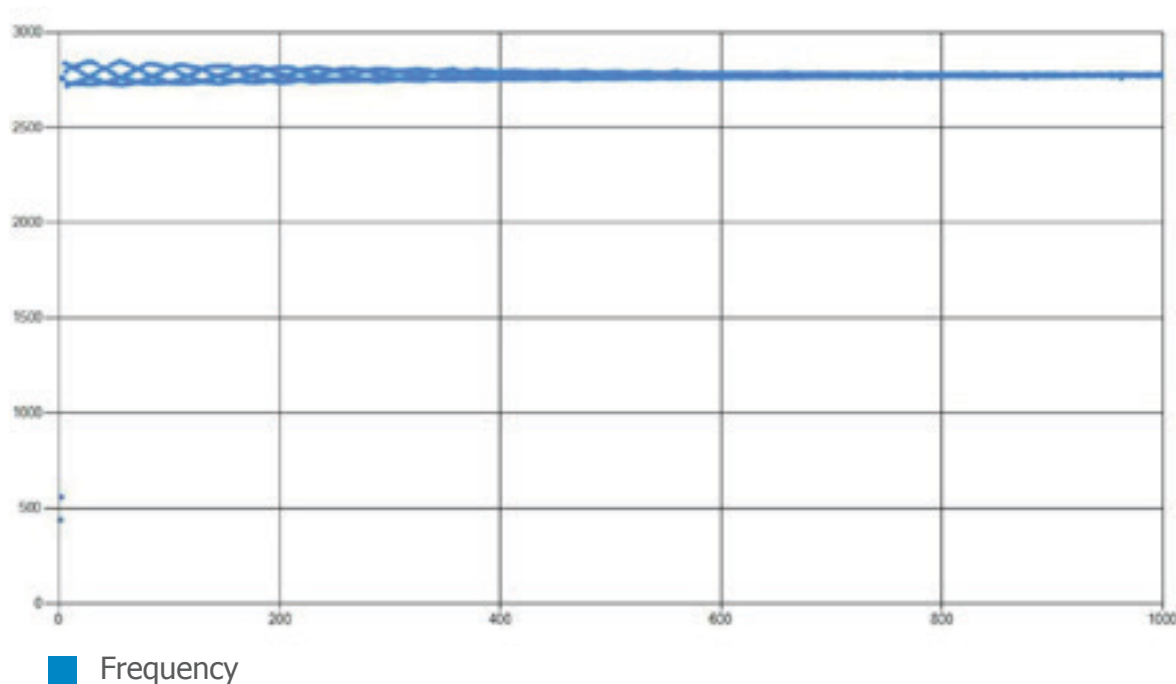
Two Way communications



App for Android and IOS for quick connect set up and test in field prior to deployment



# HOW DOES IT WORK?



1. A Vibrating Wire Piezometer (VWP) is attached via a length of cable to the Switch sensor board.
2. The VWP consists of a hardened enclosure that contains:
  - a. a tensioned wire connected to piezo pressure transducer.
  - b. An electromagnetic coil that is used to both excite the wire and measure the resultant wire vibrations.
3. Changing the applied pressure at the pressure transducer will change the tension on the wire.
4. Similar to a guitar string, changing the tension on the wire will change the frequency that the wire vibrates when it is "plucked".
5. By measuring the frequency of the wire and knowing the relationship between the frequency and the pressure, a pressure reading can be taken.

# LEADING TECHNOLOGY

## What makes the EWS Switch-VWT unique

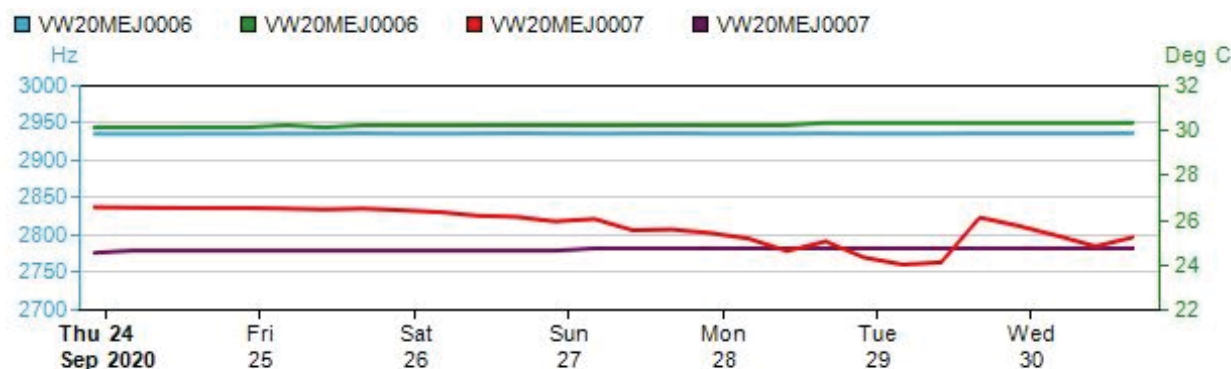
- Auto sweep frequency scanning configuration (500-5000Hz) – this is fully automated rather than the user having to configure this like other products
- Auto excitation voltage selection – this is also fully automated rather than the user having to configure this. It detects how many volts are required to excite the wires, to return the correct frequency from the VWT. i.e. short cable only 3v, medium 5v, long cable 12v
- Automatic temp compensation – the temp reading returned from the VWP can change with the atmospheric temp changes. The VWT compensates for this providing a true temp reading from the VWP
- Works with existing VWP installations using the above technology



Add row...

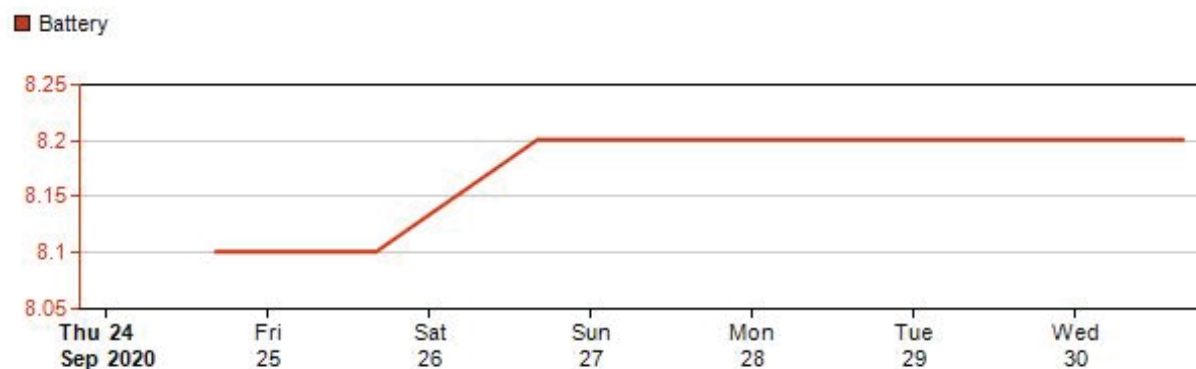


## TSF3PZ20/21 VWP



VW20MEJ0006 (Hz)	2935.3
Current Freq 2935.3	
VW20MEJ0006 (Deg C)	30.3
Current Temp 30.3	
VW20MEJ0007	2796.2
Current Freq 2796.2	
VW20MEJ0007	24.7
Current Temp 24.7	

## TSF3PZ20/21 Battery Voltage



Battery	8.2
Current Voltage 8.2	Max last 7 days 8.2
Min last 7 days 8.1	


**E. W. S. Australia**  
 Environmental Weather Systems

MAP VIEW

SITES

GROUPS

USERS

SETTINGS

METER DATA

EXPORT

FLOW

Welcome ewis



Logout

Map

Satellite

Find a Site:

Find

Find a Location:

Find

Go to a Site:

-- No Selection --



Tip: You can add and remove Sites from the map using the right mouse button.

**TSF5PZ11/12 (Online)**  
 Latest data 9 hours ago  
 Next data in 15 hours

[Click here for more detail \(login\)](#)

TSF5PZ11/12 VWP


 Current Freq: 3,006.0 Hz  
 Current Temp: 31.8 Deg C  
 Current Freq: 3,013.6 Hz  
 Current Temp: 28.9

TSF5PZ11/12 Battery Voltage


 Current Voltage: 8.20  
 min: 8.10  
 max: 8.20




# WELL CAP

Iridium, CAT M1Cell comms  
guarantees data from anywhere

Fits on any sized well or casing

Ability to connect other sensors to the same  
unit (485, SDI, Pulse, 4/20) Rain gauges,  
flow meters, well caps weather stations, etc.

5 minute set up only an, allen key required

NFC technology or Magnet to switch on

Bluetooth connect or USB

Internal rechargeable battery and solar regulator

Optional solar or lithium battery pack for long life deployment



## OTHER ACCESSORIES / FEATURES



Connects to any  
Level sensor



Fits on any well



Two Way  
communications



App for Android and  
IOS for quick connect  
set up and test in field  
prior to deployment

# WELL CAP



# FLOW METER (TFM)

Iridium, CAT M1Cell comms guarantees data from anywhere

FDN 100 – 400 sizes available

Ability to connect other sensors to the same unit (485, SDI, Pulse, 4/20) Rain gauges, flow meters, well caps weather stations, etc.

E Class flange mounting

NFC technology or Magnet to switch on

Bluetooth connect or USB

Internal rechargeable battery and solar regulator

Optional solar or lithium battery pack for long life deployment



## OTHER ACCESSORIES / FEATURES



Integrated switch transmitter into headworks



Certified to global standards



Two Way communications



App for Android and IOS for quick connect set up and test in field prior to deployment

# EWS SMARTPHONE APP

Connect via Bluetooth

Easy to navigate menus

Configure any Modbus, SDI, Pulse, Analog sensor.

Upgrade firmware OTA

No need for cable connections

Check Iridium status and force transmissions

Live onsite verifications

Help features including wiring diagrams and manuals



< Back

Sensors		↻
1. SDI 12	# 2495.00	✓ >
2. SDI 12	# 30.70	✓ >
3. SDI 12	# 2640.13	✓ >
4. SDI 12	# 30.50	✓ >
5. SDI 12	# 2700.72	✓ >
6. SDI 12	# 30.30	✓ >
7. SDI 12	# 2063.74	✓ >
8. SDI 12	# 29.70	✓ >



# EWS DATA PORTAL

Map view of sites

Easy to navigate menus

Auto export data to any existing database

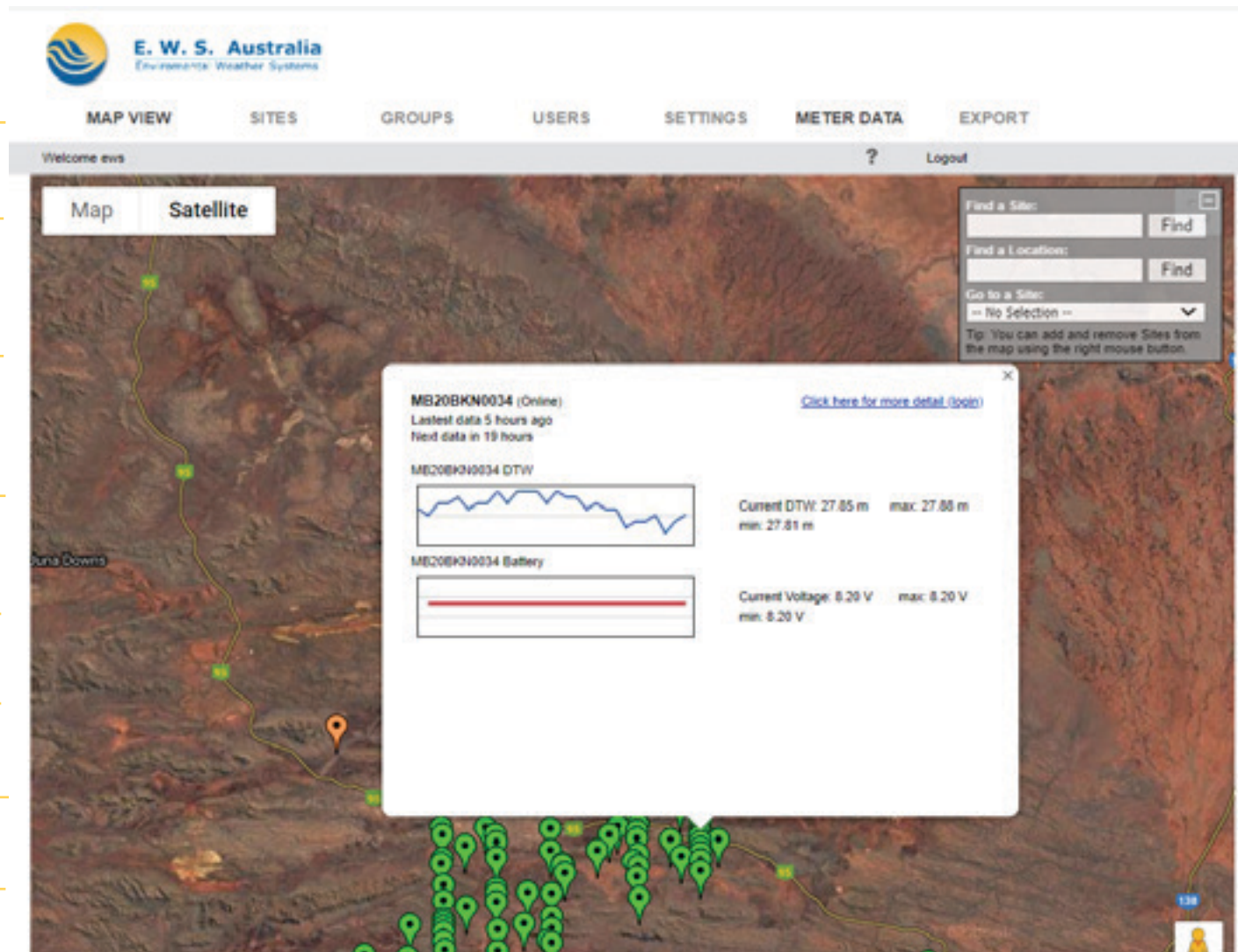
Graph or tabular view of data

Set up SMS and email alarms

Colour coded alarm status

Real time data

24/7 support



# **EWS** **TECHNICAL SUPPORT**

---





# TROUBLESHOOTING

## ROOT CAUSE

- × Incorrect communication choice
- × Incorrect installation
- × Batteries
- × Sensor failure
- × Wildlife
- × Flood events
- × Mining activity/machinery impact
- × Human impact (untrained)



# TROUBLESHOOTING SOLUTIONS

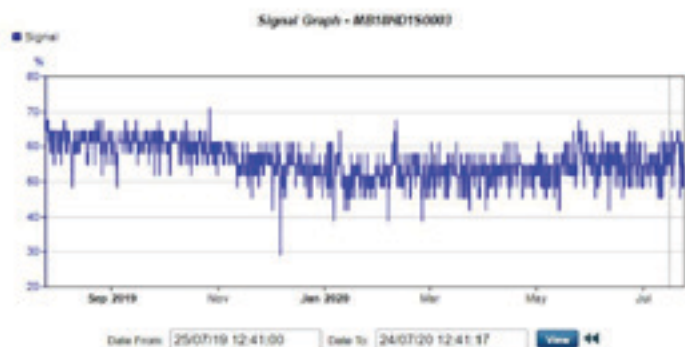
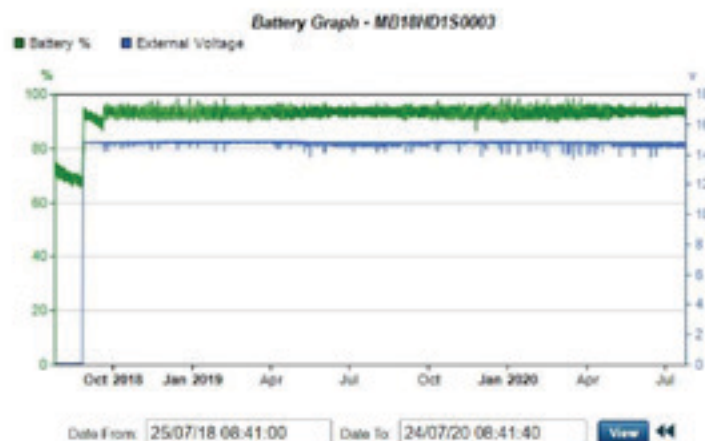
- ✓ Automated alarms for battery/sensor
- ✓ ID sites to create awareness
- ✓ Correct comms choice
- ✓ 24/7 support
- ✓ Feedback site changes to EWS
- ✓ Training online or in office
- ✓ Correct installation
- ✓ User guides



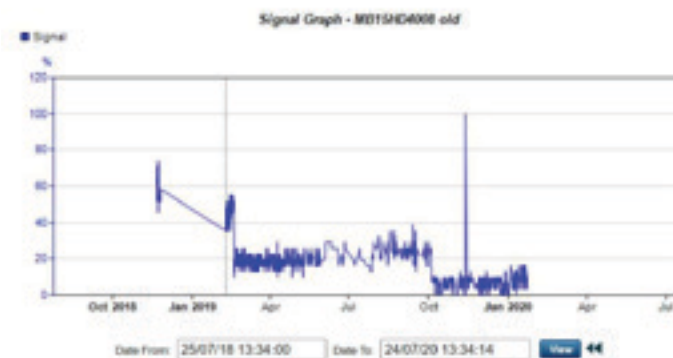
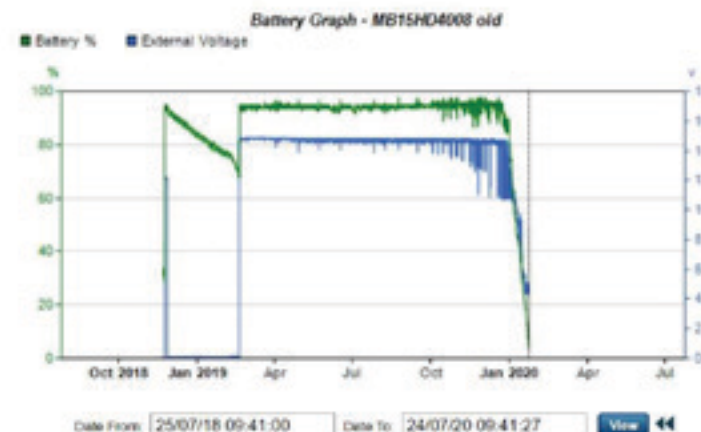


# TROUBLESHOOTING SOLUTIONS – BATTERY LIFE

Good Quality Cell Signal vs Battery Life:

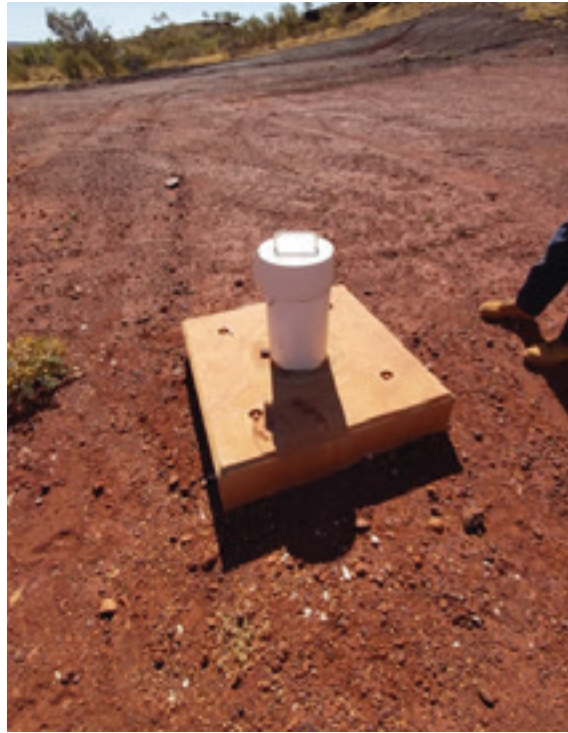


Poor Cell Signal vs Battery Life:



# TROUBLESHOOTING SOLUTIONS

## – INSTALLATIONS



# TROUBLESHOOTING SOLUTIONS – NEW DEVELOPMENT

- Backup battery
- Solar
- Interchangeable modem
- Adapting to user feedback & implementing changes
- Better tech, lower power consumption, easier to use





# FUTURE PRODUCT DEVELOPMENT 2021

---

## IRIDIUM HAWK CAMERA

